





**福島の人馬一体による地域再生
Horse as a Force to Revitalize a
Region in Fukushima**



環境造園プロジェクト演習 -D 2017 秋 Landscape Architecture Project Studio-D 2017 Autumn

担当：霜田亮祐准教授 木下勇教授

The Instructor: Assoc. Prof. Ryosuke SHIMODA Prof. Isami KINOSHITA

石川町東部の中田地区（中田郷）にある 1940 年代頃まで軍馬の養成に使われてきた「養駒運動場」に注目する。中田郷は古来より馬産が盛んな地域であり、「養駒運動場」のから地域の最高峰である「二本ブナ」エリアまで広大な馬の放牧地が存在していた。今回、「養駒運動場」と旧放牧地のエリアを歴史地域資源として見直し、人馬が活動していた道とその環境を主軸にした「ランドスナップ・ツーリズム」の拠点づくりのためのデザイン & ビルドを含むワークショップを行った。

we will focus on an old 400m horse track (養駒運動場) in Nakada region (中田郷) located in the Eastern part of Ishikawa town, where originally the local people grew a horse as a military use until 1940's. The horse track used be connected to the highest hill called NIHONBUNA (二本ブナ) and surrounding pasture area. We will think about new idea to reuse the area as a part of regional trail for a landscape tourism in this area.

協力・協賛

NPO 法人ふくしま風景塾

JC いわき石川青年会議所

中田造林組合

仲田 茂 様 ご夫妻

助成

Fukushima Prefecture Land Readjustment Association (FLA) (福島県区画整理協会)

Chiba University Educational GP (千葉大学教育 GP)

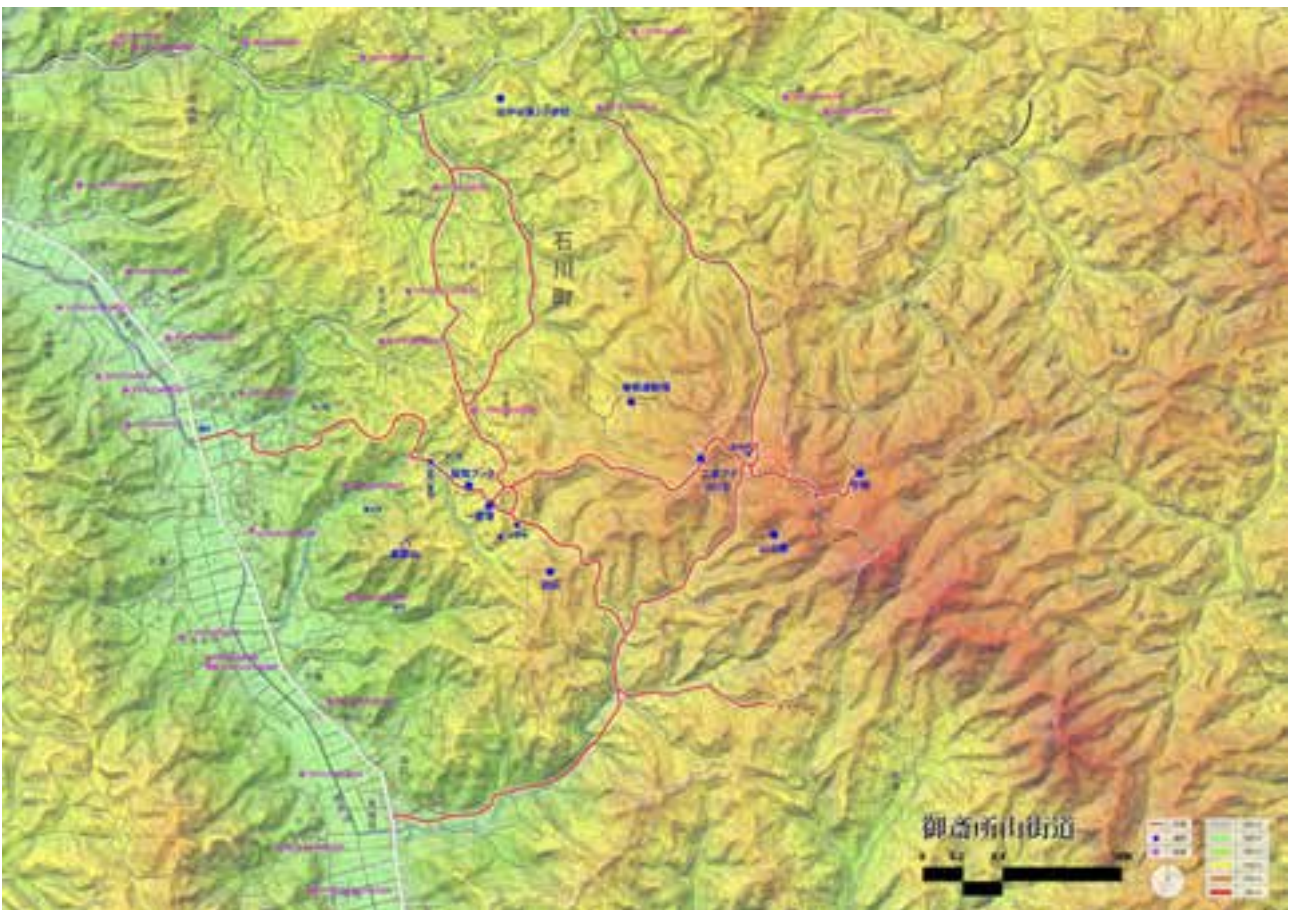


養駒運動場の空中写真 (Google Earth)

Aerial Photo of the old horse track(Google Earth)

中田地域マップ 中田地域内の古道を赤いラインで示す (調査：三田 恭裕)

Nakada Regional Map The red lines indicate the old roads in the Nakada area(Research by Yasuhiro MITA)





Landscape Excursion in Nakada Region

仲田氏の実家でランチミーティングを行う

Lunch meeting at Mr. Nakada family's house



養駒運動場でのランドスケープの講義と、周辺地域の現地調査
Landscape lecture at the old horse track and surrounding area



Tree cutting



中田造林組合と学生団体が連携した伐採活動
Tree cutting activity collaborated by the forest cooperative and students group



加納武夫石川町長の訪問と中田造林組合が提供した昼食
Visitation by Takeo KANO Ishikawa Mayor and served lunch by the forest cooperative



Design & Build Work

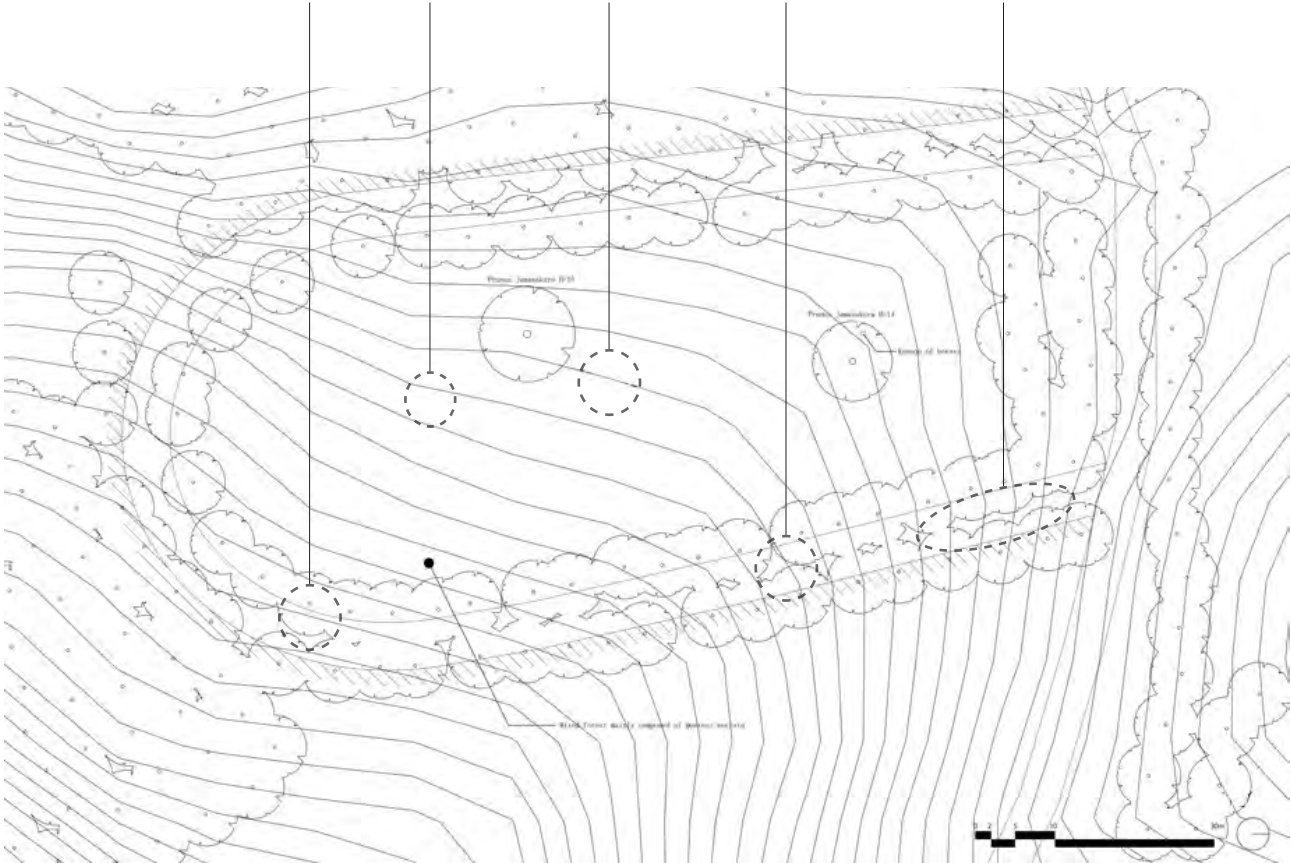


グループ A の対象地
Target location of group A

グループ B の対象地
Target location of group B

グループ C の対象地
Target location of group C

作品 5 作品 1 作品 2 作品 4 作品 3
Work 5 Work 1 Work 2 Work 4 Work 3

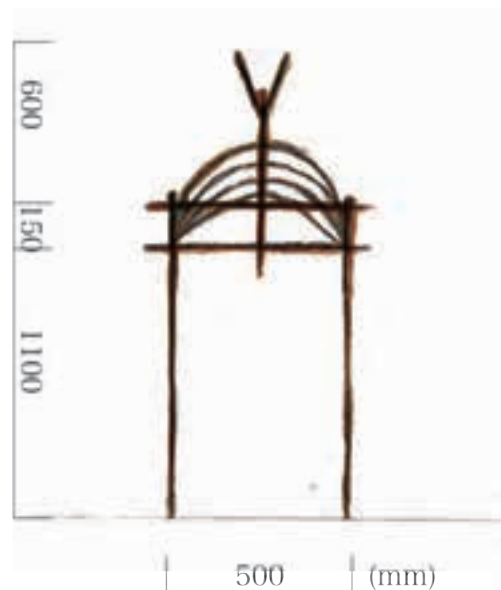
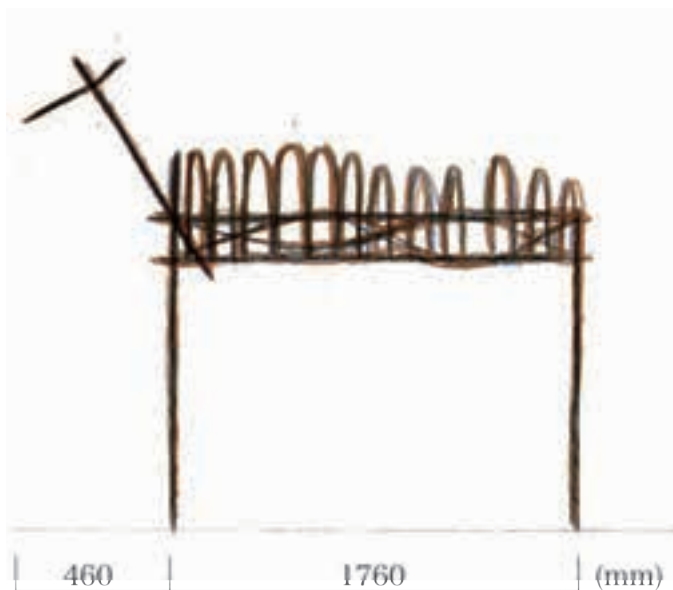




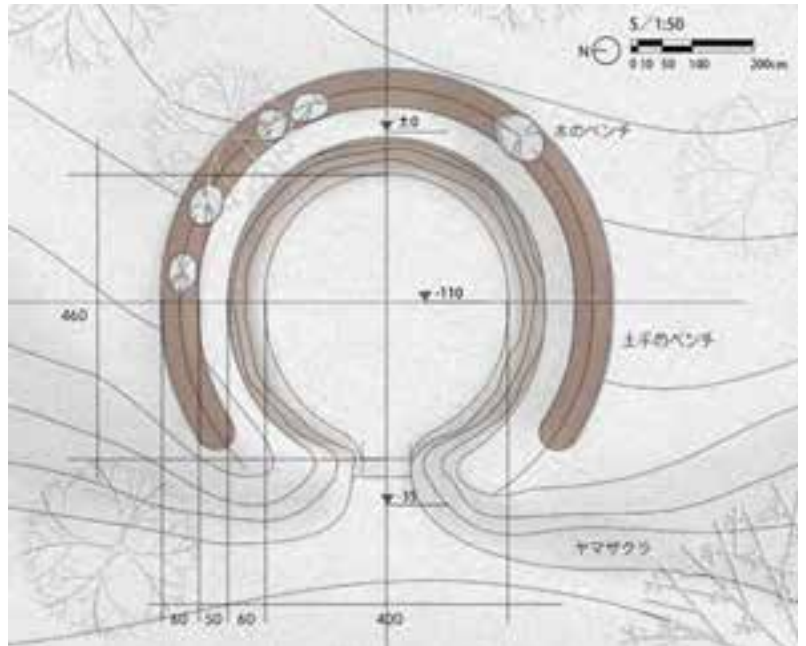
作品 1 Work 1

現地の素材で作った馬「花子ちゃん」

"Horse" Hanako-chan made from local materials



(Drawing: Motoko Yoshio)



(Photo and drawing: Rui CHEN)

作品 2 Work 2

"Excavation of the old charcoal oven"



作品 3

Work 3

The Rainbow Horseshoe



作品 4

Work 4

Horseshoe Bench



作品 5

Work 5

The Door of Scenery





学生たちの声 Student Reflection

チンズイ (M1/China)

"すごく有意義なワークショップに参加させて頂き、ありがとうございました。心から先生達や地元の人々に感謝申し上げます。今回のワークショップで自分の認識が一層深くなったのは自然と触れ合うことがランドスケープデザイナーによってすごく大事なことです。

ランドスケープデザイナーとしてテーブルの上の図面に心を注ぐ同時に出来るだけ自然と触るべき、環境でデザインに可能性がある要素を見つけようと思います。自然と触れ合っながら、自分の手で触った素材、目に見た景色、素材の肌理、色を体験から場所に対する解読力の鋭さを育うことができるでしょう。"

Shi Qu (Double Degree Student/Beijing Forestry University)

"This is the first time for me to participate in the workshop at Chiba University. In my mind, this is an interesting topic. We try to use the horse as a force to achieve regional revitalization.

Our design method is very simple. Use a method of land art to repay everything that nature gives us. I propose 6 steps to revitalize a region in Fukushima, which is a combination of landscape, infrastructure, life, services, culture and so on.

I will always remember the days of Ishikawa Town, because it taught me that the power of nature is infinite."

Minami Musha (M1/Japan)

"かつて軍用馬が駆け回っていたという1周約400mの養馬場跡地ははじめ「ここがその場所です」と紹介されてもぱっとしないほどに樹木や下草が生い茂っていた。しかし高くまっすぐにのびる杉林がかつてのトラックを形どり、埋もれなが

らも残り続け、現代にこの場所の記憶を伝えているというのがとても興味深く、杉林以外を伐採してかつてのトラックが現れたときにはとても感動しました。"

Stuart Hutchinson (Exchange Student/The University of Sheffield)

"An excellent workshop which I enjoyed very much. It was a great exposure to Japanese culture, the location, the local villagers and key community figures, the accommodation, onsen and the food (which was amazing). Academically it also revealed some the main issues faced by rural communities and especially communities of the Fukushima region, post-daiichi disaster (2011). Obviously there has been above average emigration due to evacuation, but also few people have returned and the area suffers from a negative image problem which is also affecting both agriculture and tourism, the main economies of the region. More briefing of these issues faced both locally and regionally would be a good addition in future, both to increase the general education of these issues and also it will help with the purpose of the workshop and the design process."

Hiu Lam YEUNG (Exchange Student/The University of Sheffield)

"The three days workshop in Nakada Ishikawa town, Fukushima prefecture gave us a chance to think about the tourism in that area. The transformation of the old horse track will probably bring in more visitors as there is a reason and historical appreciation for public to stay. To some extent, this will be the core area in a landscape tourism which could revitalise in the Nakada region. It is not a quick nor easy job to revitalise the area due to many constraints such as capital, communication between stakeholders and lack of understanding of this place."



ワークショップ参加者
Workshop participants

中田トレイルのトレッキング
Trekking On " Nakada Trail"



養駒運動場

Old Horse Track



